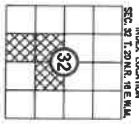
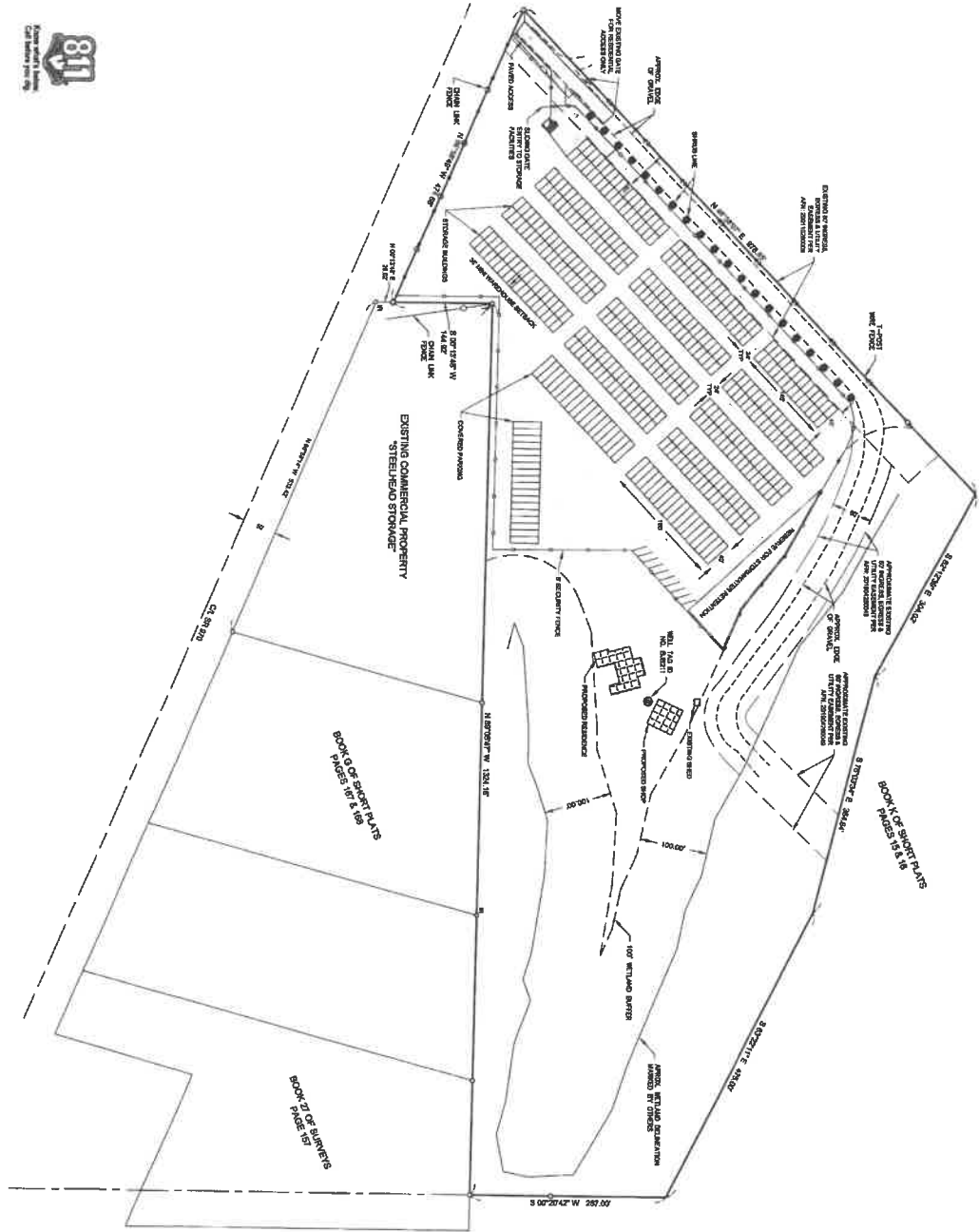


3581 SR 970
 A PORTION OF THE E 1/2 OF THE SW 1/4 & A PORTION OF THE NW 1/4 OF THE SE 1/4 OF SECTION 32, T. 20 N., R. 16 E., W.M.
 KITTITAS COUNTY, STATE OF WASHINGTON



DATE	2018
BY	
CHECKED	
DESIGNED	
PROJECT NO.	
SHEET	

Encompass
 ENGINEERING & SURVEYING
 Western Washington Division
 165 NE Jasper Street, Suite 201 • Bellingham, WA 98227 • Phone: (425) 392-0210
 407 Sandstone Blvd • Clarkston, WA 98922 • Phone: (509) 674-7433

WLC PROPERTY HOLDINGS LLC
 SITE PLAN

REVIEW DRAFT

REVISIONS		
DESCRIPTION	BY	DATE

WE MAKE NO STATEMENTS ON THE BEST USE AND WILL MAKE NO WARRANTY OF ACCURACY CONCERNING A SURVEY.